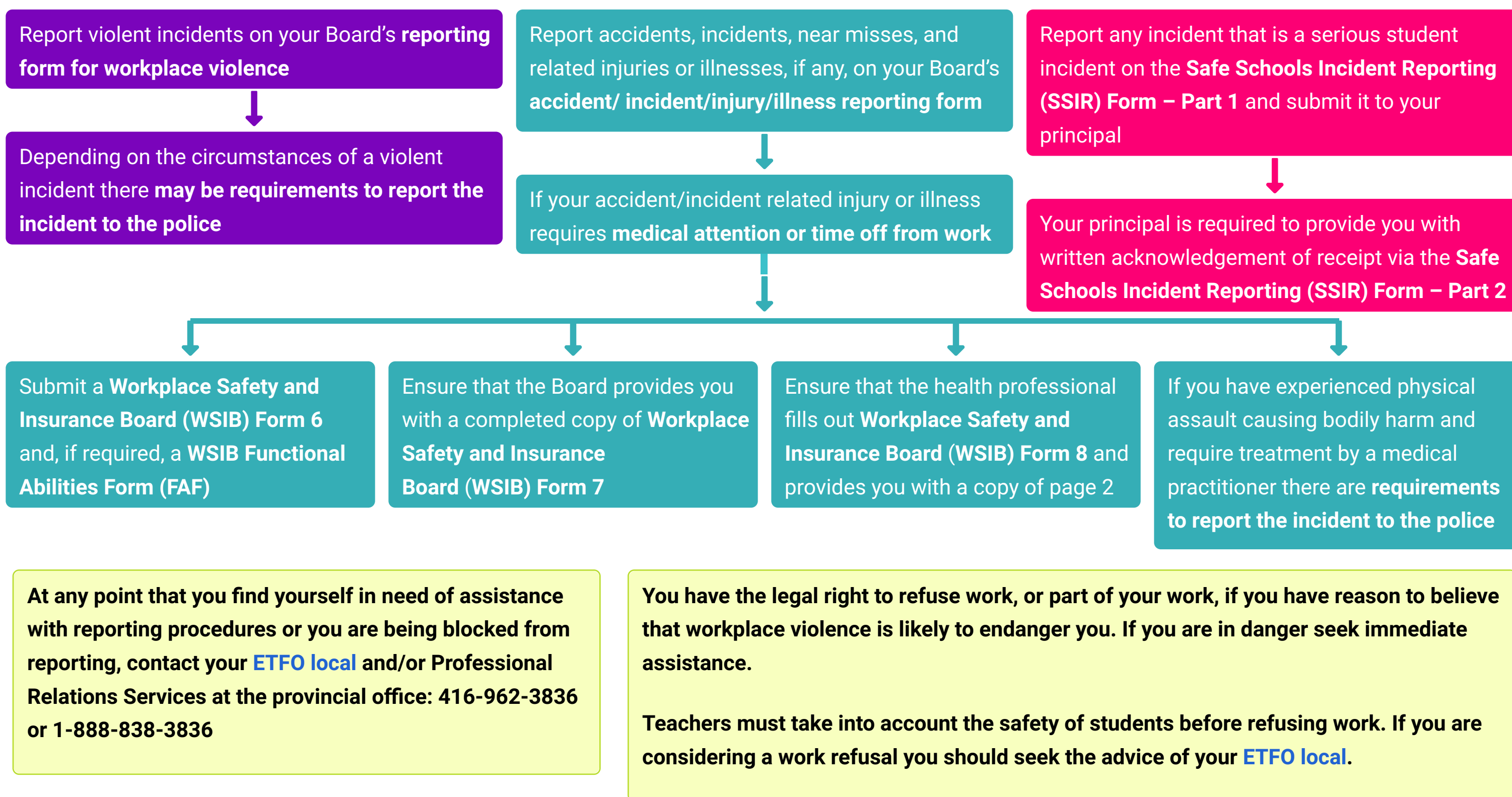


ETFO Flowchart for Reporting Workplace Violence and Serious Student Incidents

****For your own records you should keep a copy of all forms being filled out****

If you are involved in a **violent incident** and/or **serious student incident**, you are legally required to take one or more of the following steps:



More detailed information on the Workplace Violence Reporting Process in School Boards can be found on the [Road Map, Appendix H](#) of [Workplace Violence in School Boards: A Guide to the Law](#) with links to legislation and policy documents.